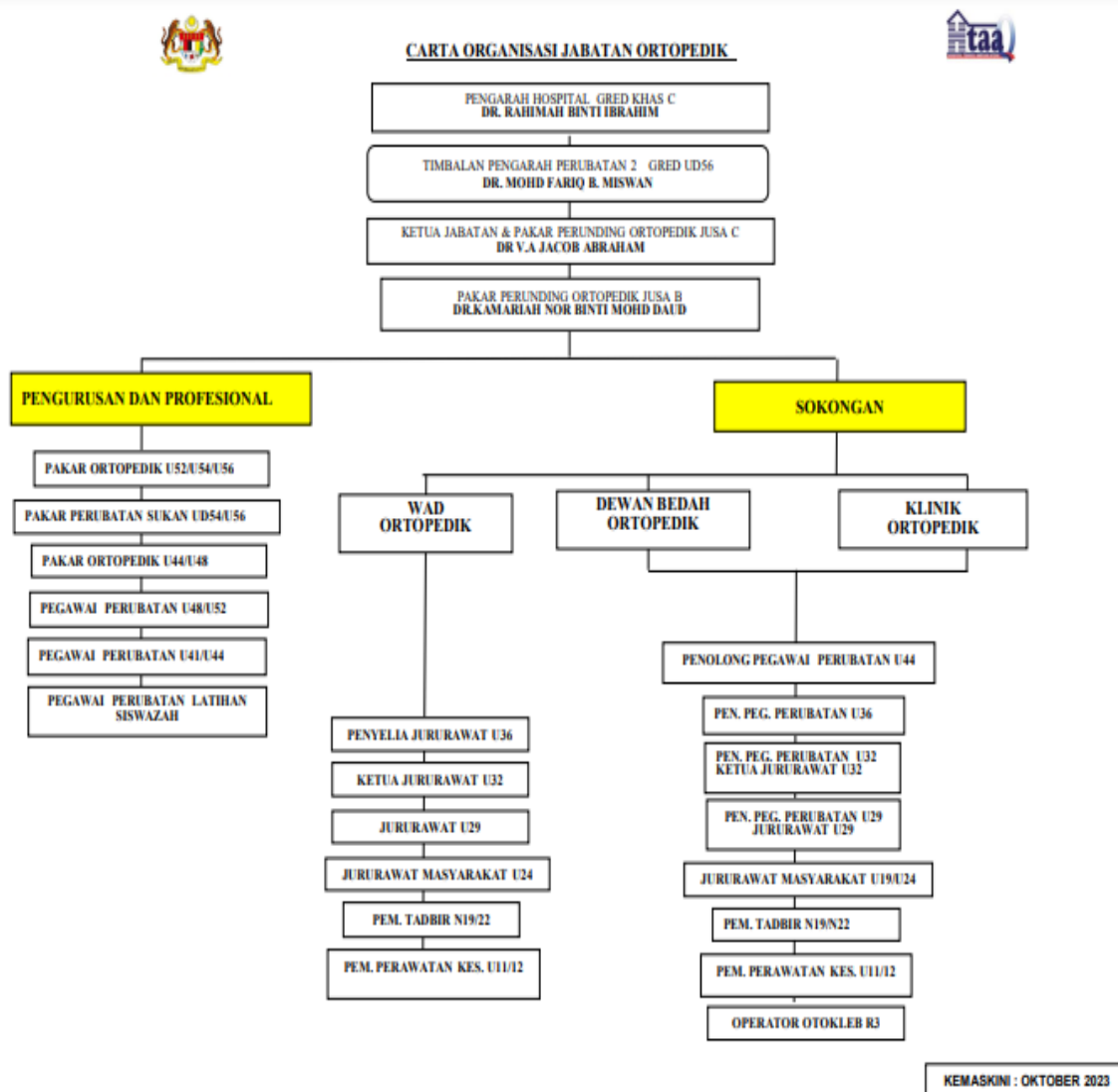
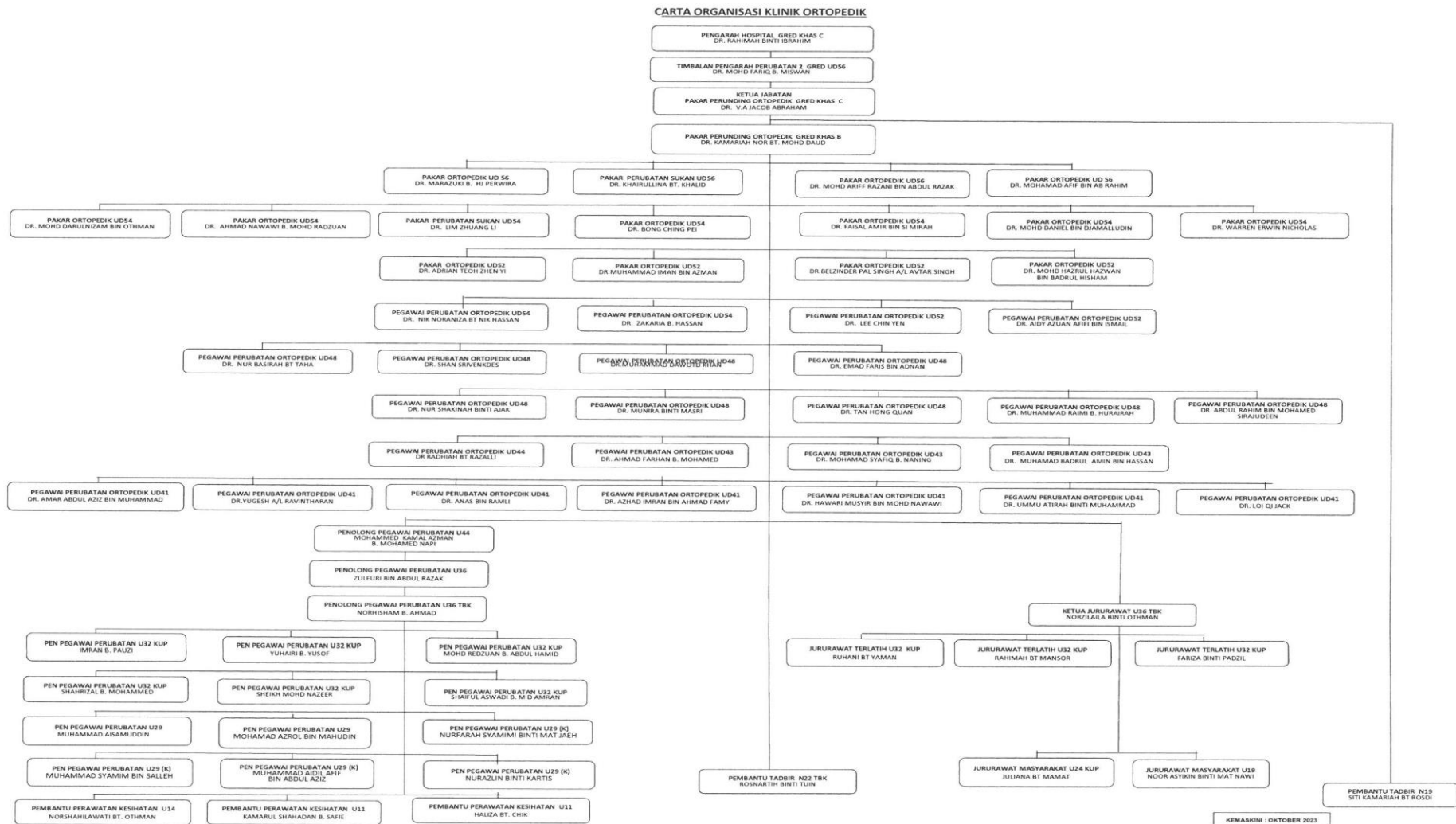


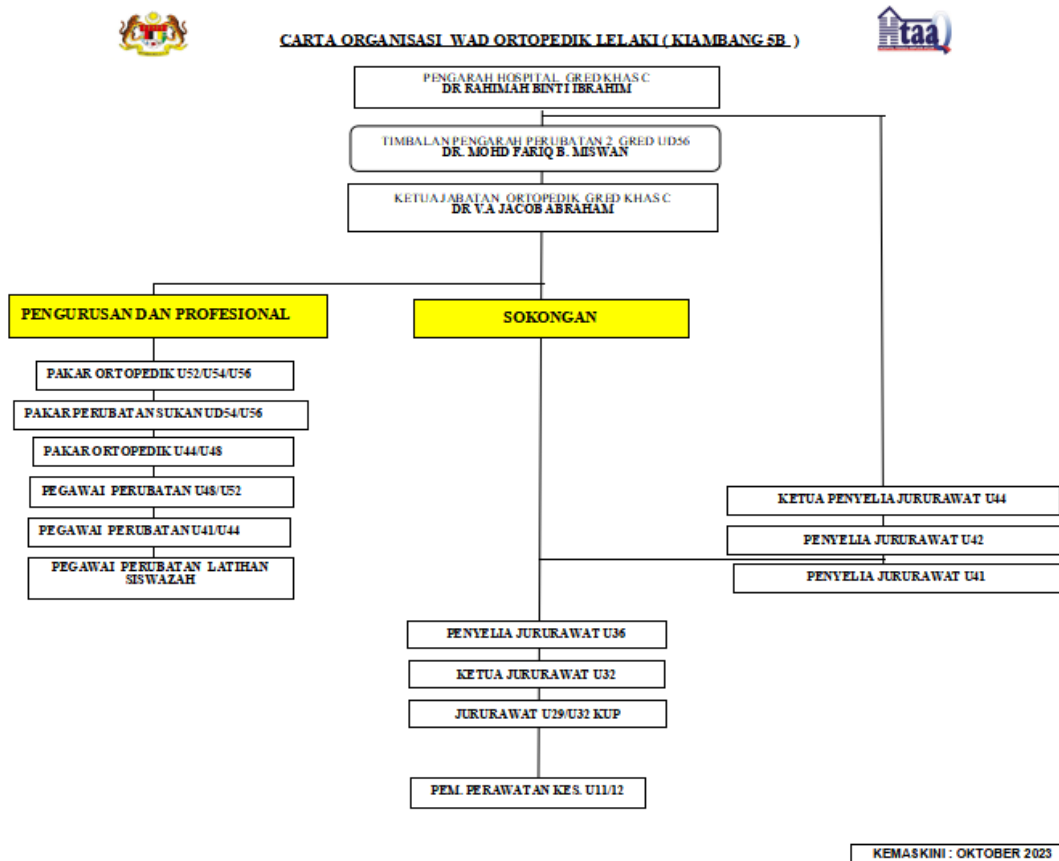
## ORGANIZATIONAL CHARTS

### A) Orthopaedic Department

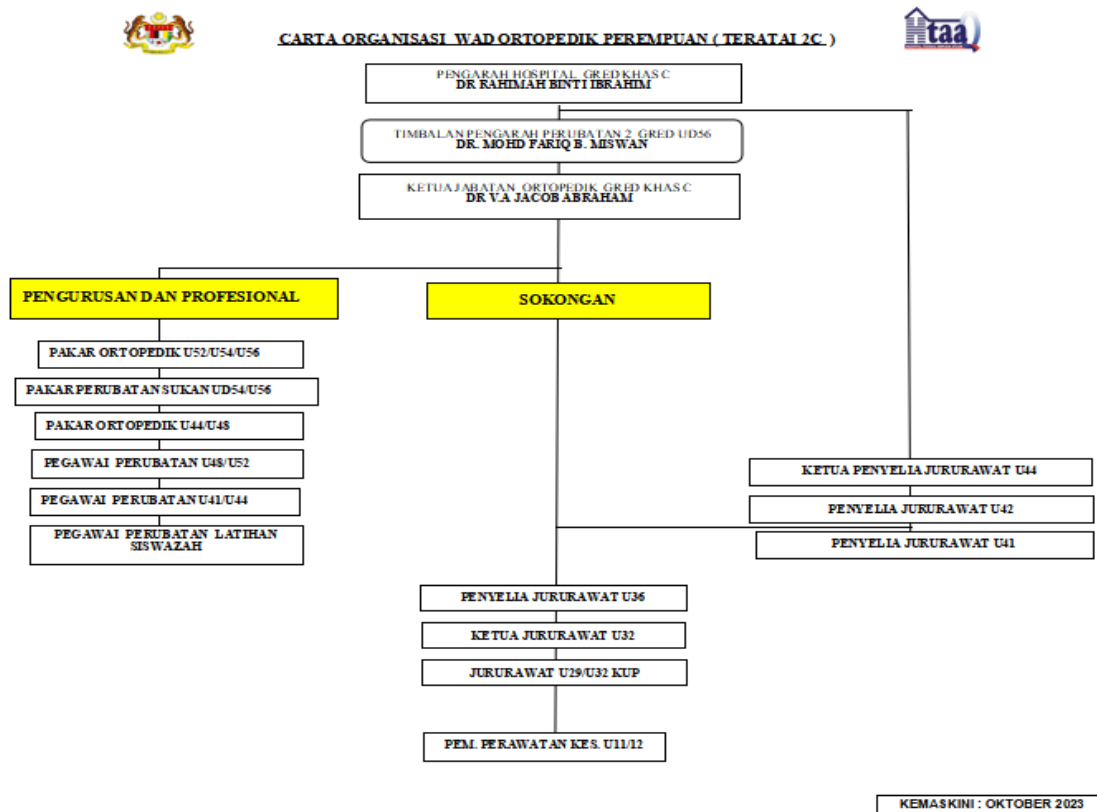




### C) Orthopaedic Male Ward (Kiambang 5B)



## D) Orthopaedic Female Ward (Teratai 2C)



### CARTA ORGANISASI DEWAN BEDAH ORTOPEDIK



KIMASKINI: NOVEMBER 2022

